



Powered by Healthspace®

Healthspace® AI

Data Warehouse | Advanced Analytics | Artificial Intelligence

Healthspace ties everything together to align population health features to your culture, incentives, and budget to drive results.



Improve Outcomes

Improve well-being, prevention, detection, and access to primary care to reduce the lifetime need for acute, chronic, and long-term care, while optimizing the delivery of health and wellness benefits to improve outcomes.



Lower Per-Capita Costs

Lower per-capita costs with Robotic Process Automation (RPA) to respond in real-time to reduce fragmented and duplicate care while enabling ready-to-launch platforms, modules, and templates to reduce custom programming and speed implementation.



Enhance Experiences

Enhance member, payer, and provider experiences by providing unified access to everything they need via simple, secure, and easy to navigate interfaces making it possible to better engage each user and personalize the delivery of all services and information.

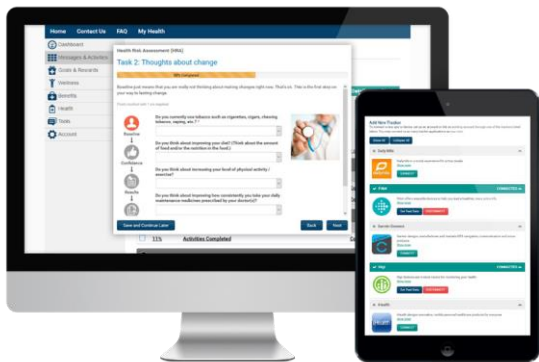


Healthspace Integration Platform as a Service (iPaaS)

- Data Warehouse
- Data Integration
- Risk Questionnaires
- Predictive Modeling
- AI Data Processing
- Online Reporting

www.hciactive.com
info@hciactive.com

Integrate and Manage Data



Healthspace Member Portal



Healthspace Office

Healthspace® AI Platform



Data Collection Methods

Combine clinical data and survey tools to assess the health risk of your population and personalize engagement to best support members.



Predictive Modeling

Predict an individual's health over time using existing data from medical claims, electronic medical records and demographics



Artificial Intelligence

Bridge the gap between big data and the reality of practical decision making. We simplify data to identify associations resulting in higher quality insights.



Robotic Process Automation

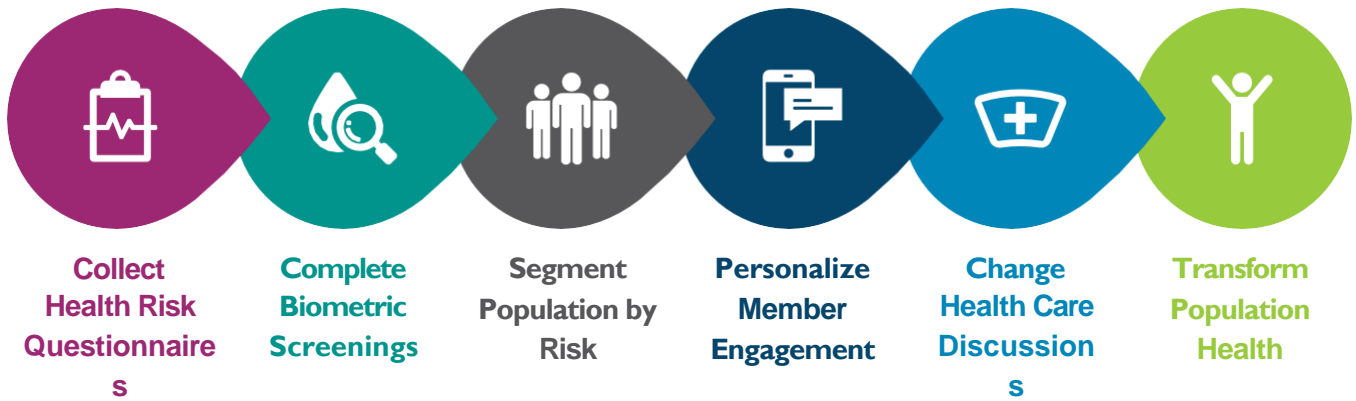
Leverage the most advanced predictive and user behavior analytics along with comprehensive data methodology to deliver personalized experiences.

Better Manage Health Plan Risk

Understand more, and be proactive

Go beyond traditional predictive modeling derived from just medical and pharmacy claims data.

Integrate engagement, self-reported information, connected devices, biometric screenings, and other sources to better understand needs and how to tailor solutions to bend your health care cost curve.



Comprehensive Data Analytics Translates to Actionable Intelligence

HIGH RISK MEMBER ANALYSIS



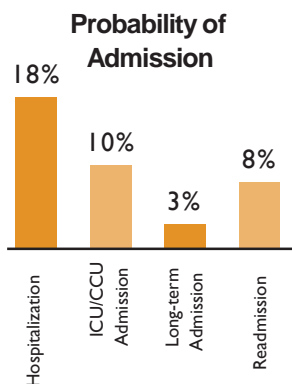
History

Age: 35
Gender: Male

Prior Claims Costs:
\$6,719

Chronic Conditions: **11**

12 Month Predictive Cost
\$14.5K-18K



Treated Conditions

High Impact

Ischemic heart disease
ESRD

Moderate Impact

Type 2 diabetes, w/
complication
Peripheral vascular
disease
Cerebrovascular disease

Low Impact

Disorders of lipid
metabolism
Hypertension, w/o major
complications
Osteoporosis
Cataract, aphakia
Conjunctivitis, keratitis
Disorders of newborn
period
Renal disorders, other
Dermatitis and eczema

HIGH RISK MEMBER PERSONA PROFILE

CARMEN

Construction Worker
Married | Age 58
Pittsburgh, PA



Features:

- Health Coaching
- Locate Provider
- Claims
- Current & Past Rx Medicine
- Beneficiaries
- Lab Data
- Flexible Spending Account
- Goals & Rewards

Behavior/Attitude

Wellness

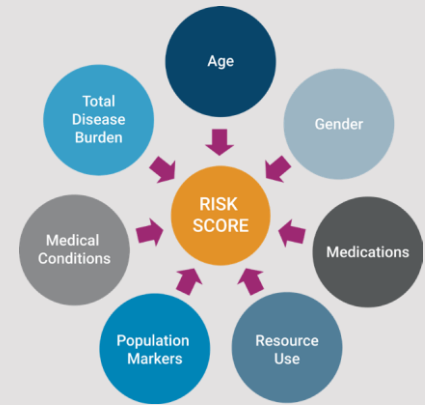
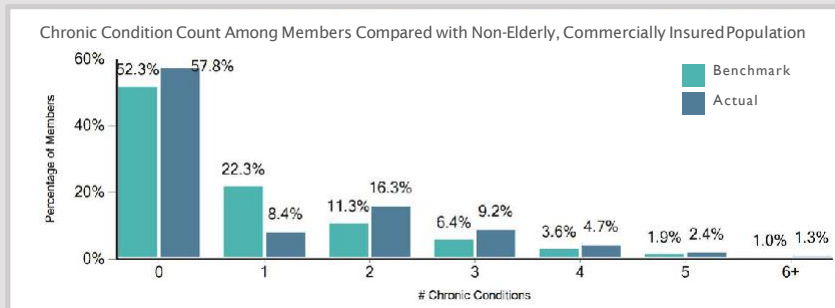


Population Analysis

Predictive models can guide wellness programming to ensure resources are allocated where they're most needed. Administrative resources help mitigate risk, improve outcomes, and reduce per capita costs.

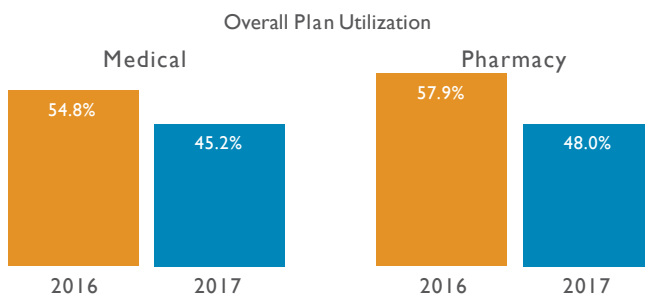
Predictive Modeling & Risk Assessment

This report models and predicts a population's health over time to provide insights into health needs, disease prevalence and resource usage of a population.



Client Comprehensive Summary Report

This report provides detailed results from Health Risk Assessment (HRA) data and Lab/Biometric Screenings data. It is a comprehensive accounting of the data collected from member responses and measurements that also contains areas with cross-tabbed data and impact analysis.



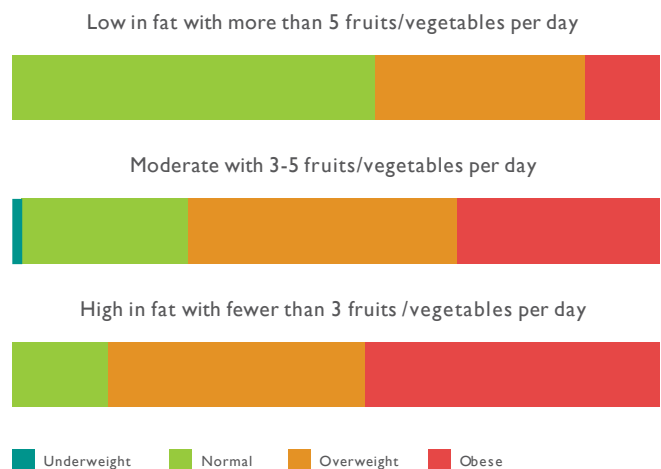
Report Contents Include:

- HRA Participation
- Biometrics / Lab Screening Participation
- Disease Risk
- Lifestyle Risk
- Readiness to Change

Executive Performance Summary Report

This report includes an integrated assessment of health plan performance and utilization as well as medical and Rx cost by diagnoses. The data included in this package is intended to provide insight to drive program enhancements, benefit plan changes and other strategic actions directed at improving both the quality and the affordability of the overall health care experience.

Cross-tab of BMI vs. Diet: Fruits and Vegetables by Respondents

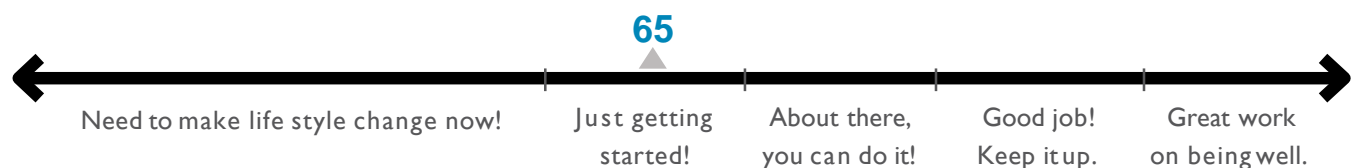


Personalized Member Insights

Member-specific reports provide valuable, personalized health information based on each member's data. Reporting is provided in an easy-to-read, understandable format and is structured to foster member awareness of their health status and motivate them to achieve positive healthy behaviors and clinical outcomes. Members are encouraged to review reporting with their personal RN Health Coach to deepen the coach/member relationship.

Member Comprehensive Summary Report

This report gives detailed wellness results and recommendations for the Health Risk Questionnaire and Lab and Biometric Screenings that your group recently completed. In addition to the instant results reports that you've already received, this report is designed to pull all of your health and wellness information together to provide a complete picture of your current health, and provide recommendations for improvement.



Member Health Status Report

This report gives the member an in-depth review of their current health status against company-wide statistics. Program participation and clinical outcomes are scored on a spectrum of Assessment, Awareness, Action and Adoption. Recommendations are provided to motivate and remind members where their health priorities should be focused for maximum improvement in health.



Member Lab & Biometric Results Report

This report provides a summary of the member's lab test values and biometric screening results. Explanations and target ranges are provided with lab test and biometric results for ease in understanding and follow-up with a physician. Any members with abnormal results are contacted by an RN health coach. The focus is on making members aware of issues, and motivating them to improve their numbers.

Lab and biometric screenings provide a first line clinical insight and reveal previously undiscovered risk. Jump start preventive care by offering screenings at onsite events at your workplace and giving the option to print vouchers for direct access to LabCorp or Quest Diagnostics patient service centers nationwide. Our health coaches provide immediate, confidential consultation, if onsite, or make outbound outreach calls in the case of critical abnormal results.

Integrated Programs & Features

Healthspace AI is already connected to population health management programs and features to make your data actionable and drive results.



Online & Mobile Access

Online and mobile access for members to their incentive dashboard, HRA, lab screenings scheduling and vouchers, claims data, recommended preventive screenings resources and more. We offer challenges, seminars, digital coaching modules, interactive trivia, food & fitness trackers which are integrated with 150+ Bluetooth enabled devices, and other wellness activities through the member portal. These activities are designed to sustain positive behavioral change by creating a supportive and fun environment that engages employees in their health and workplace.

Disease Management

RN Health Coaches provide members with a holistic, personal approach to managing both pre-emerging and existing medical conditions. Prochaska Readiness to Change (RtC) methodology is used by the coach to guide the member to achieve success at the member's pace.

Incentives and Rewards

Present members with a customized and enticing incentive program that presents specific goals and meets their unique needs. Offering incentives to members for participation and ultimately for outcomes is a critical success factor for wellness programs. Members view and manage their incentive opportunities via the member portal/mobile apps. Full reporting and analysis around the efficacy of incentives on a program, as well as projected incentive models are also reported.

Biometric and Lab Screenings

Integration with existing Biometric and Lab Screenings providers to capture screenings data feeds and provide health coaching outreach to members with lab alerts. Lab data will be housed in the member portal and when available can be viewed year over year.

Health Coaching

RN Health Coaches provide integrated wellness/lifestyle behavioral coaching and chronic conditions management. Health coaches have access to a member's risk profile including a summary of health conditions, gaps in Rx compliance, medical claims, HRA responses, and lab data. Communication is telephonic or via secure messaging on the member portal. Self-paced digital health coaching modules and health educational seminars are also accessible to members online. All health coaching follows Prochaska's methodologies of behavior change. Health coaches promote PCP relationship for maximized clinical integration.

Health Risk Questionnaires

Online 10-minute questionnaire about a member's health, lifestyle, and wellness goals. Also available on paper and through Interactive Voice Response technology.



Personalized Content to Effectively Target Members

Administrative tools meet the needs of every population segment, with a focus on member-centric programming, personalization and customization so that content is relevant at the member level. Real-time reporting is available to uncover missing insights and gaps in programming.